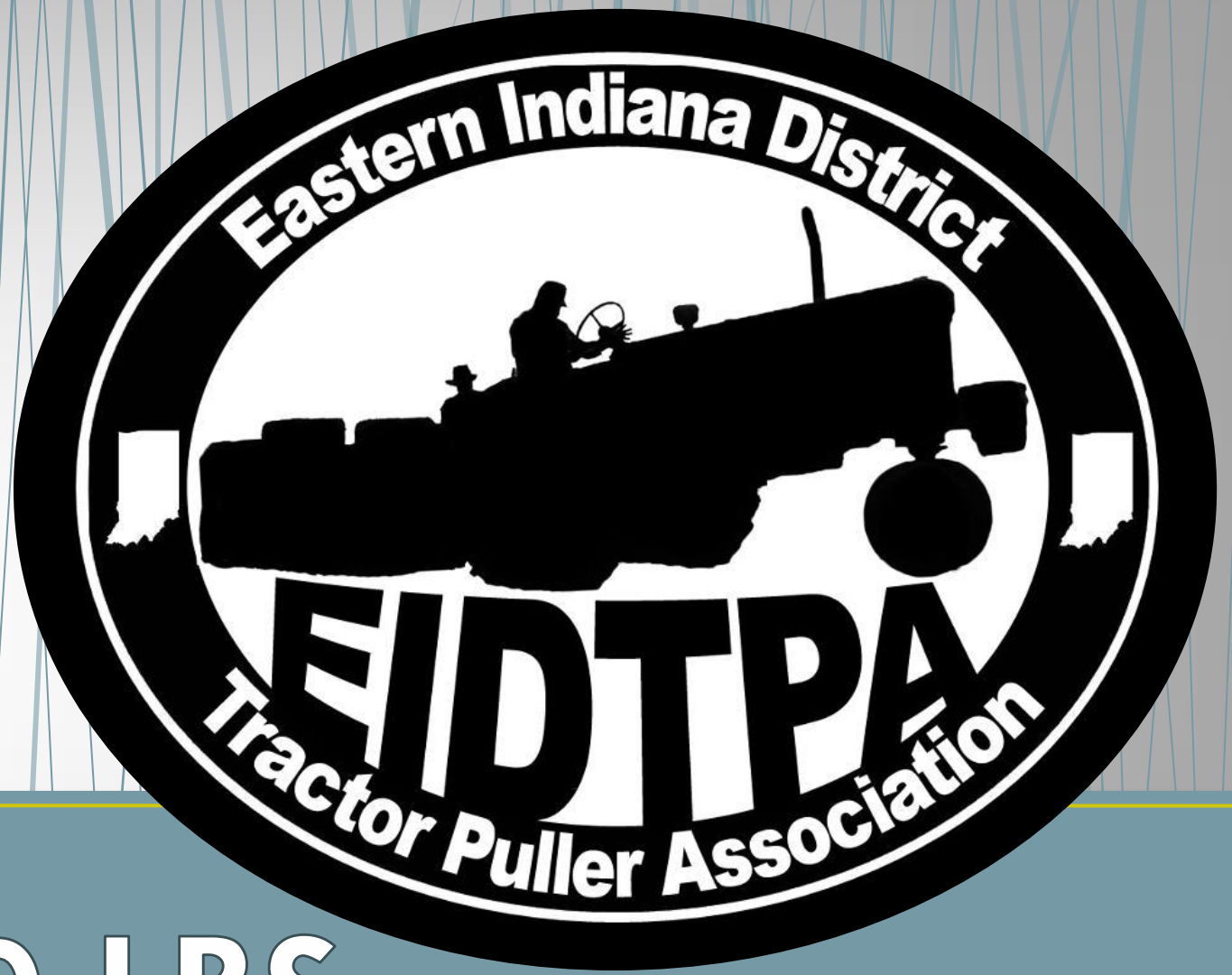


# 2019 Eastern Indiana District Tractor Puller Association Awards

“THE ORIGINAL TRACTOR PULLING”





**5,500 LBS**



**5TH** Tie

Andy Mastin  
UND-30  
16 pts



**2019 - 5,500 LBS**





# 5TH Tie

Nate Niehoff

460-36

16 pts



**2019 - 5,500 LBS**





# 4TH

Nate Moran

1600-4

18 pts



## 2019 - 5,500 LBS



**3<sup>RD</sup>**

Mike Mastin

560 BL-32

20 pts



**2019 - 5,500 LBS**





# 2ND

Dave Angle

1650-10

20 pts



## 2019 - 5,500 LBS





# 1<sup>ST</sup>

Doug Harpring

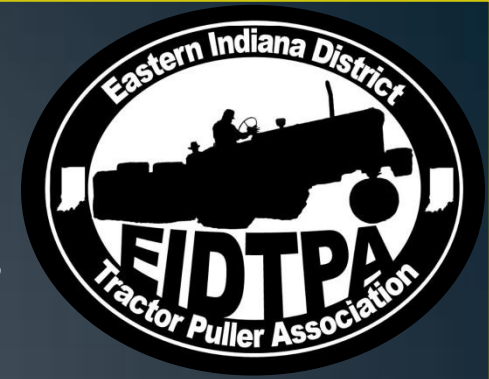
656-45

30 pts

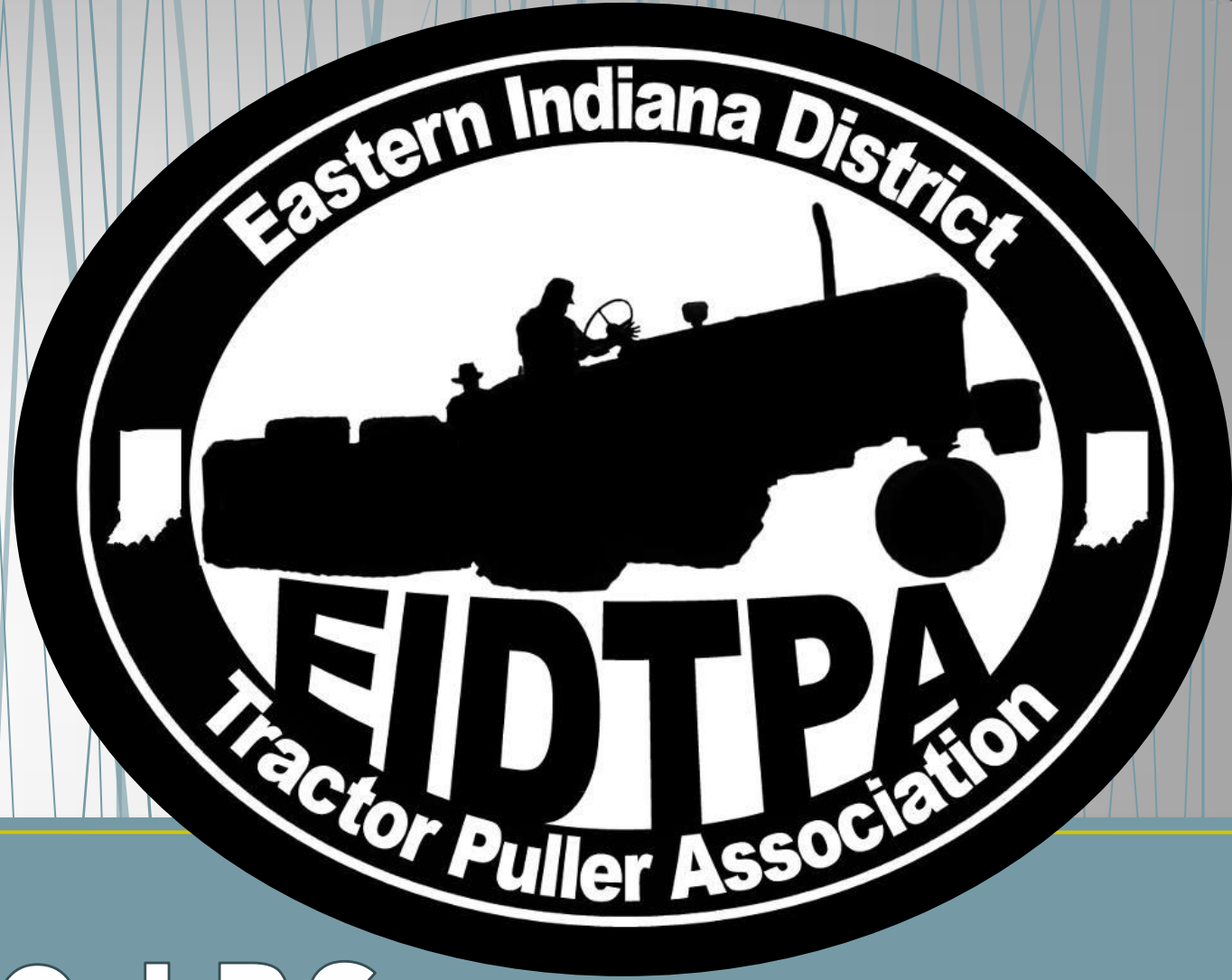


## 2019 - 5,500 LBS

# 5,500 LBS



- 1<sup>ST</sup> Doug Harpring 656-45 30 pts
- 2<sup>ND</sup> Dave Angle 1650-10 20 pts
- 3<sup>RD</sup> Mike Mastin 560 BL-32 20 pts
- 4<sup>TH</sup> Nate Moran 1600-4 18 pts
- 5<sup>TH</sup> Tie Andy Mastin UND-30 16 pts
- 5<sup>TH</sup> Tie Nate Niehoff 460-36 16 pts



**10,000 LBS**





# 6TH

Frank Harpring

966-58

14 pts



## 2019 - 10,000 LBS



# 5TH

Aaron Mastin

706-34

16 pts



## 2019 - 10,000 LBS





# 4TH

Brian Byrnes

1206-64

17 pts



## 2019 - 10,000 LBS





**3<sup>RD</sup>**

Frank Harpring

706-43

18 pts



**2019 - 10,000 LBS**



# 2ND

Larry Johnson

756-25

19 pts



## 2019 - 10,000 LBS





**1<sup>ST</sup>**

Doug Harpring

826-24

26 pts



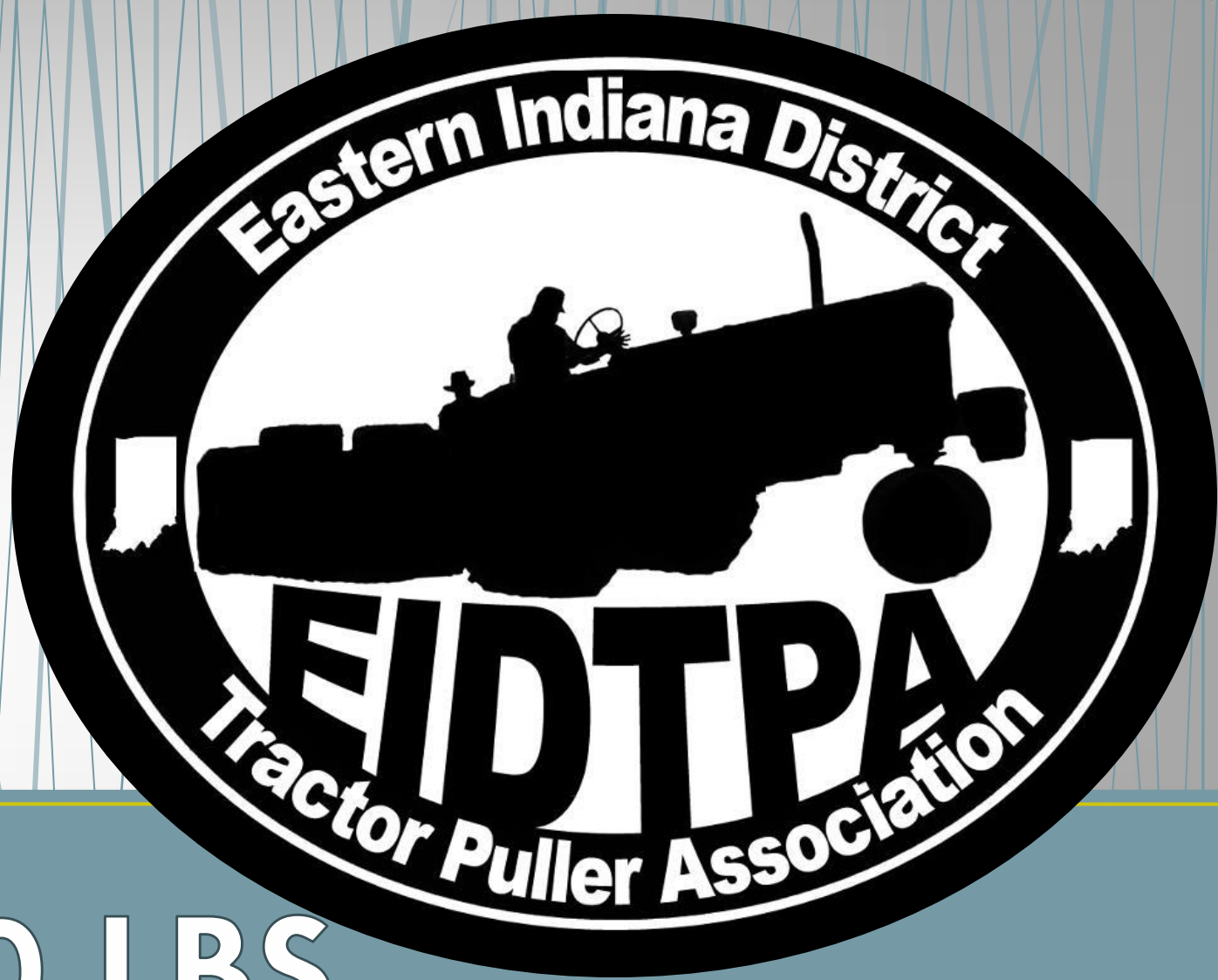
**2019 - 10,000 LBS**



# 10,000 LBS



- 1<sup>ST</sup> Doug Harpring 826-24 26 pts
- 2<sup>ND</sup> Larry Johnson 756-25 19 pts
- 3<sup>RD</sup> Frank Harpring 706-43 18 pts
- 4<sup>TH</sup> Brian Byrnes 1206-64 17 pts
- 5<sup>TH</sup> Aaron Mastin 706-34 16 pts
- 6<sup>TH</sup> Frank Harpring 966-58 14 pts



**6,000 LBS**



6<sup>th</sup>

Aaron Mastin

GHOST-33

13 pts



2019 - 6,000 LBS





# 5TH

Pat Moran

1650-8

14 pts



## 2019 - 6,000 LBS





# 4TH

Aaron Mastin

UND-30

16 pts



## 2019 - 6,000 LBS





**3<sup>RD</sup>**

Doug Harpring

656-45

17 pts



**2019 - 6,000 LBS**



# 2ND

Mike Mastin

560 BL-32

19 pts



## 2019 - 6,000 LBS





# 1ST

Dave Angle

1650-10

20 pts



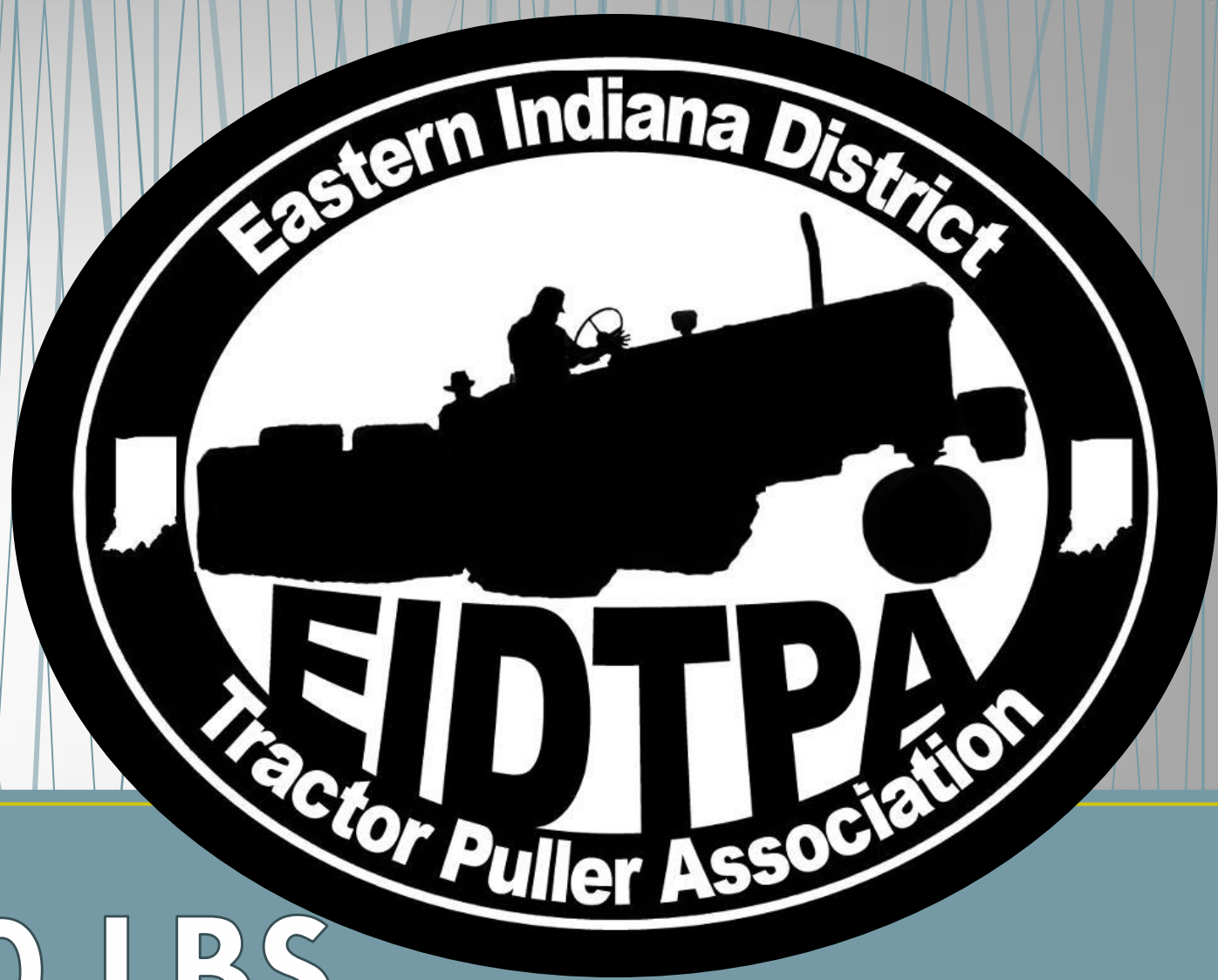
## 2019 - 6,000 LBS

# 6,000 LBS

- 1<sup>ST</sup> Dave Angle 1650-10 20 pts
- 2<sup>ND</sup> Mike Mastin 560BL-32 19 pts
- 3<sup>RD</sup> Doug Harpring 656-45 17 pts
- 4<sup>TH</sup> Aaron Mastin UND-30 16 pts
- 
- 5<sup>TH</sup> Pat Moran 1650-8 14 pts
- 6<sup>TH</sup> Aaron Mastin GHOST-33 13 pts







**9,500 LBS**



# 6TH Tie

Darren Niehoff

1800-18

12 pts



## 2019 - 9,500 LBS





6<sup>th</sup>

Tie

Frank Harpring

706-43

12 pts



2019 - 9,500 LBS



# 5TH

Doug Harpring

826-24

15 pts



## 2019 - 9,500 LBS





# 4TH

Andy Mastin

806-35

20 pts



## 2019 - 9,500 LBS



**3<sup>RD</sup>**

Larry Johnson

756-25

26 pts



**2019 - 9,500 LBS**





# 2ND

Andy Mastin

706-34

30 pts



## 2019 - 9,500 LBS



# 1<sup>ST</sup>

Nate Moran

1850-29

32 pts



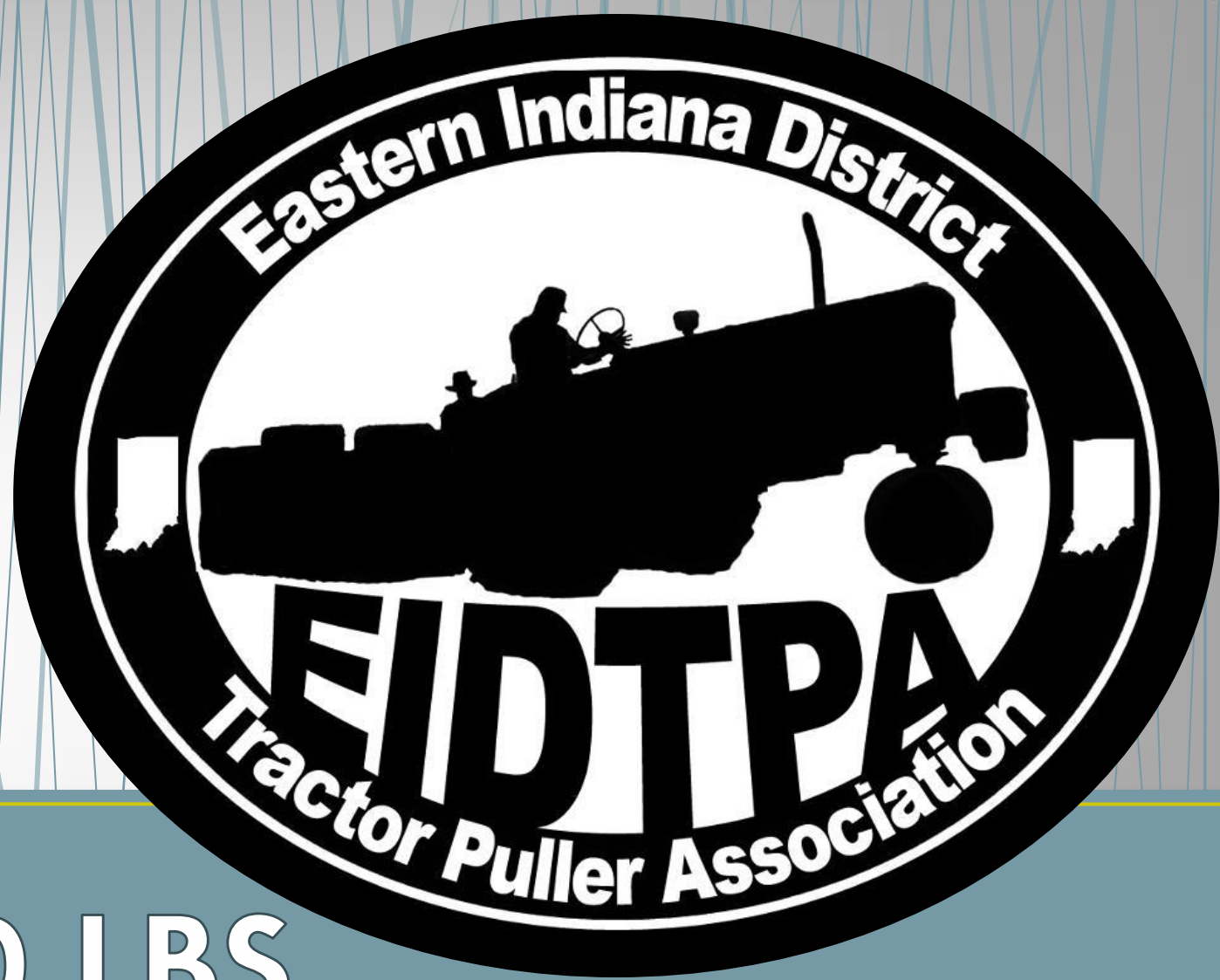
## 2019 - 9,500 LBS



# 9,500 LBS

- 1<sup>ST</sup> Nate Moran 1850-29 32 pts
- 2<sup>ND</sup> Andy Mastin 706-34 30 pts
- 3<sup>RD</sup> Larry Johnson 756-25 26 pts
- 4<sup>TH</sup> Andy Mastin 806-35 20 pts
- 5<sup>TH</sup> Doug Harpring 826-24 15 pts
- 6<sup>TH</sup> Tie Darren Niehoff 1800-18 12 pts
- 6<sup>th</sup> Tie Frank Harpring 706-43 12 pts





6,500 LBS





# 6TH

Brian Johnson

770-26

11 pts.



## 2019 - 6,500 LBS



# 5TH

Andy Mastin

UND-30

13 pts



## 2019 - 6,500 LBS





# 4TH

Doug Harpring

656-45

23 pts



## 2019 - 6,500 LBS



**3<sup>RD</sup>**

Jackson Hubbell

560-7

25 pts



**2019 - 6,500 LBS**





# 2ND

Dave Angle

1650-10

28 pts



## 2019 - 6,500 LBS



# 1<sup>ST</sup>

Tim Moran

560-3

30 pts



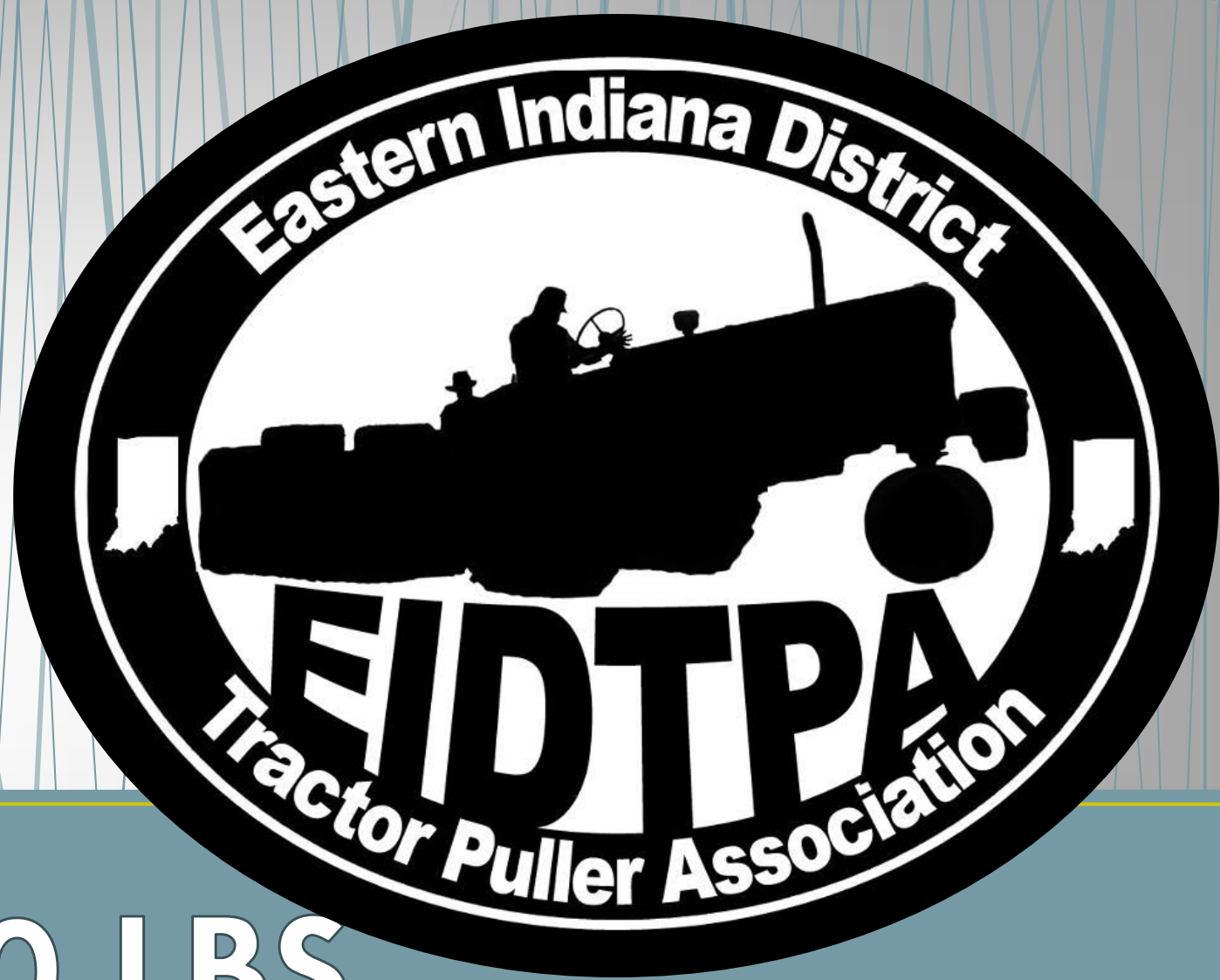
## 2019 - 6,500 LBS



# 6,500 LBS



- 1<sup>ST</sup> Tim Moran 560-3 30 pts
- 2<sup>ND</sup> Dave Angle 1650-10 28 pts
- 3<sup>RD</sup> Jackson Hubbell 560-7 25 pts
- 4<sup>TH</sup> Doug Harpring 656-45 23 pts
- 5<sup>TH</sup> Andy Mastin UND-30 13 pts
- 6<sup>TH</sup> Brian Johnson 770-26 11 pts



**9,000 LBS**





# 6TH

Pat Moran

1850-29

14 pts



## 2019 - 9,000 LBS



# 5TH

Aaron Mastin

806-35

17 pts



## 2019 - 9,000 LBS





# 4TH

Larry Johnson

756-25

20 pts



## 2019 - 9,000 LBS



**2nd**  
Tie

Doug Harpring

826-24

23 pts



**2019 - 9,000 LBS**





**2ND**  
Tie

Kevin Byrnes

1850-15

23 pts



**2019 - 9,000 LBS**



**1<sup>ST</sup>**

Aaron Mastin

706-34

26 pts



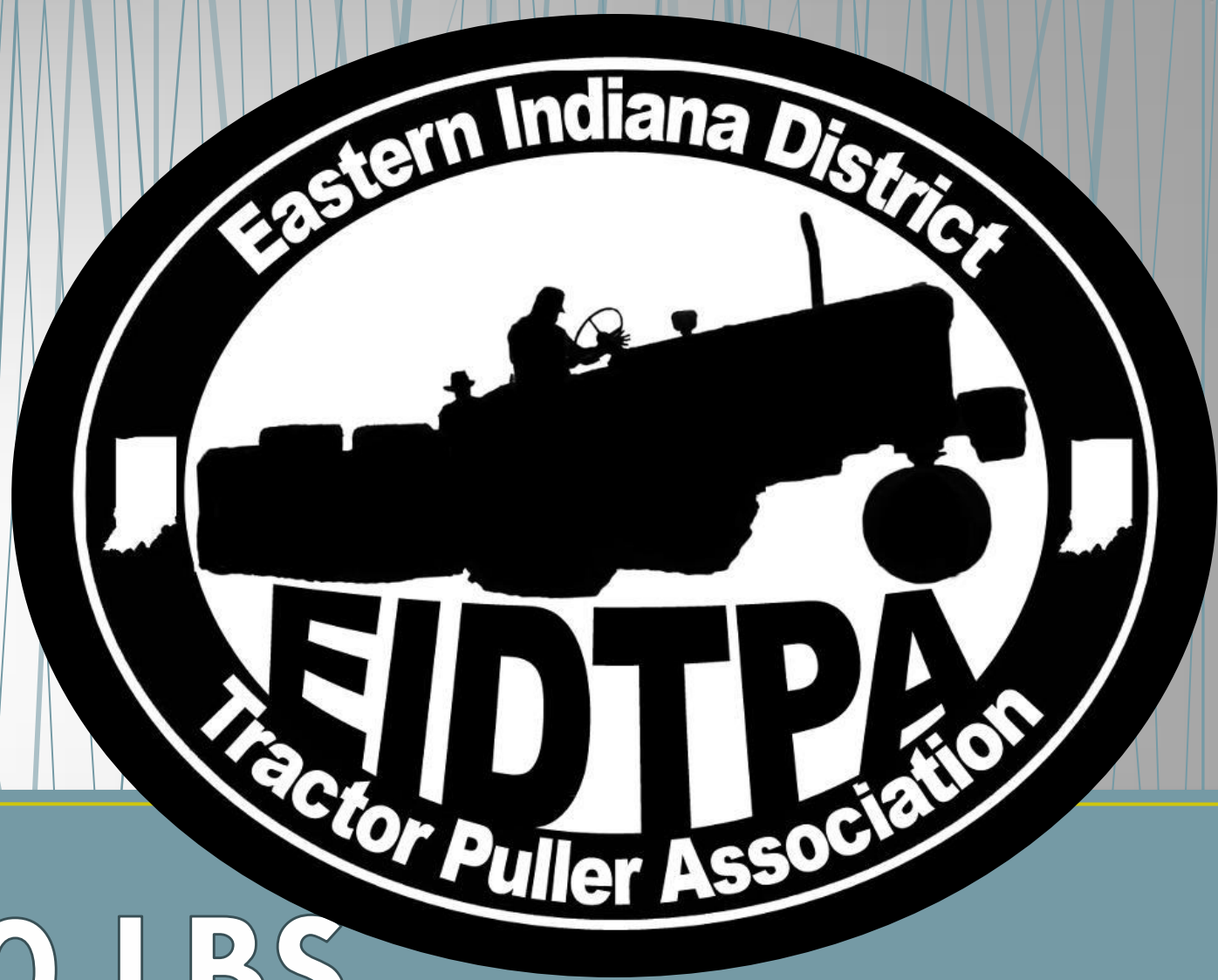
**2019 - 9,000 LBS**



# 9,000 LBS

- 1<sup>ST</sup> Aaron Mastin 706-34 26 pts
- 2<sup>ND</sup> Tie Kevin Byrnes 1850-15 23 pts
- 2<sup>nd</sup> Tie Doug Harpring 826-24 23 pts
- 4<sup>TH</sup> Larry Johnson 756-25 20 pts
- 5<sup>TH</sup> Aaron Mastin 806-35 17 pts
- 6<sup>TH</sup> Pat Moran 1850-29 14 pts





**7,000 LBS**





# 6TH Tie

Aaron Mastin

Ghost-33

8 pts



2019 - 7,000 LBS



# 6TH Tie

Aaron Mastin

UND-30

8 pts



2019 - 7,000 LBS





**6TH**  
Tie

Jackson Hubbell

560-7

8 pts



**2019 - 7,000 LBS**



# 6TH Tie

Nate Moran

1600-4

8 pts



**2019 - 7,000 LBS**





# 6TH Tie

Patrick Jordan

400-20

8 pts



2019 - 7,000 LBS



**6TH**  
Tie

Andy Mastin

GHOST-33

8 pts



**2019 - 7,000 LBS**





# 5TH

Mike Mastin

560BL-32

10 pts



## 2019 - 7,000 LBS



# 4TH

Tim Moran

560-3

17 pts



## 2019 - 7,000 LBS





**3<sup>RD</sup>**

Dave Angle

1650-10

19 pts



**2019 - 7,000 LBS**



# 2ND

Tim Moran

SP-5

29 pts



## 2019 - 7,000 LBS





# 1<sup>ST</sup>

Doug Harpring

656-45

39 pts



## 2019 - 7,000 LBS

# 7,000 LBS

- 1<sup>ST</sup> Doug Harpring 656-45 39 pts
- 2<sup>ND</sup> Tim Moran SP-5 29 pts
- 3<sup>RD</sup> Dave Angle 1650-10 19 pts
- 4<sup>TH</sup> Tim Moran 560-3 17 pts
- 5<sup>TH</sup> Mike Mastin 560BL-32 10 pts

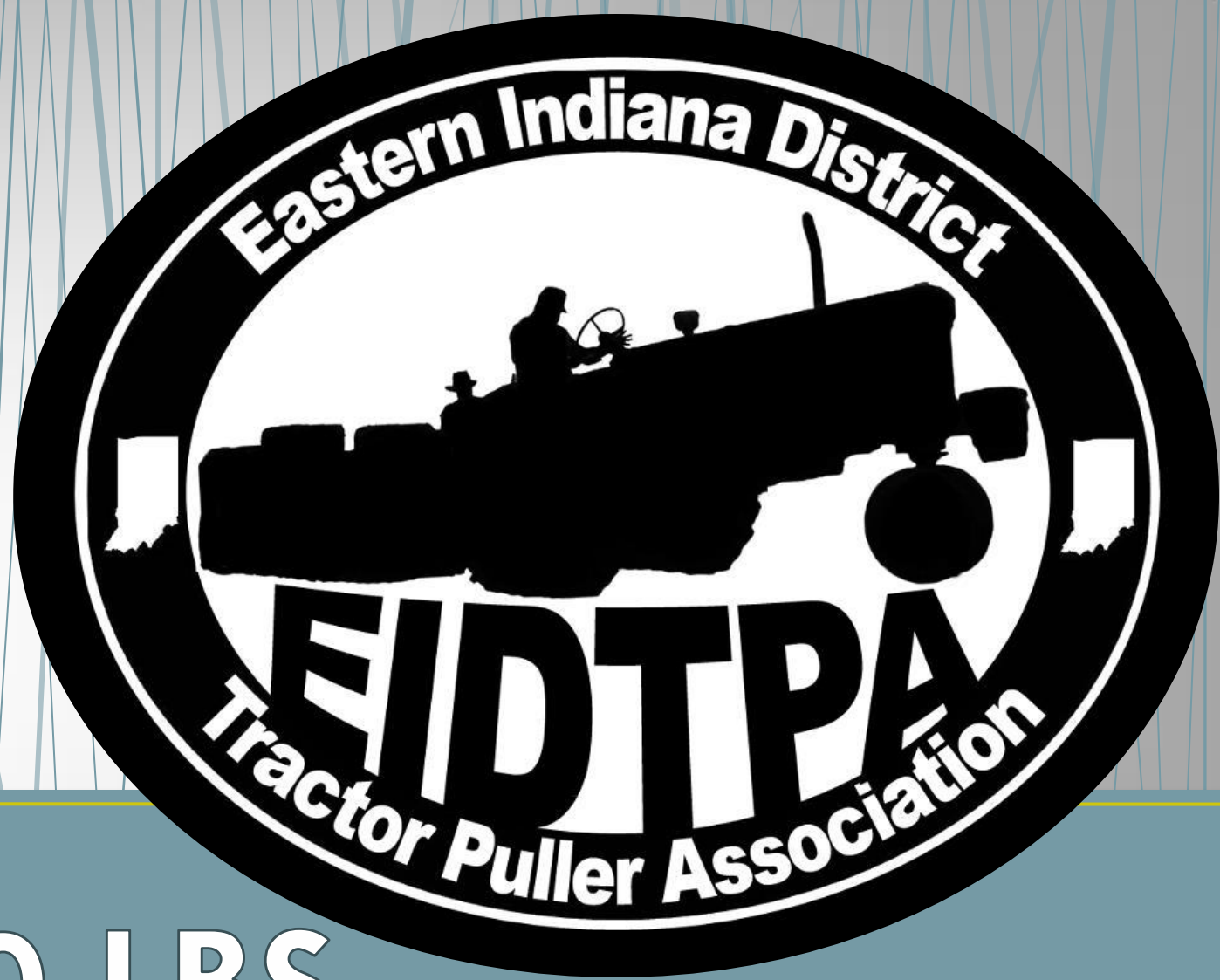




# 7,000 LBS TIE

- 6<sup>th</sup> Andy Mastin GHOST-33 8 pts
- 6<sup>th</sup> Patrick Jordan 400-20 8 pts
- 6<sup>th</sup> Nate Moran 1600-4 8 pts
- 6<sup>th</sup> Jackson Hubbell 560-7 8 pts
- 6<sup>th</sup> Aaron Mastin UND-30 8 pts
- 6<sup>th</sup> Aaron Mastin GHOST-33 8 pts





**8,500 LBS**





# 6TH Tie

Frank Harpring

706-43

14 pts



**2019 - 8,500 LBS**



# 6TH Tie

Andy Mastin

706-34

14 pts



**2019 - 8,500 LBS**





**4TH**  
Tie

Kevin Byrnes

1850-15

16 pts



**2019 - 8,500 LBS**



**4TH**  
Tie

Brice Byrnes

1850-15 D

16 pts



**2019 - 8,500 LBS**





**3<sup>RD</sup>**

Doug Harpring

826-24

22 pts



**2019 - 8,500 LBS**



# 2ND

Brian Byrnes

1206-64

26 pts



## 2019 - 8,500 LBS





1<sup>ST</sup>

Pat Moran

1850-29

28 pts



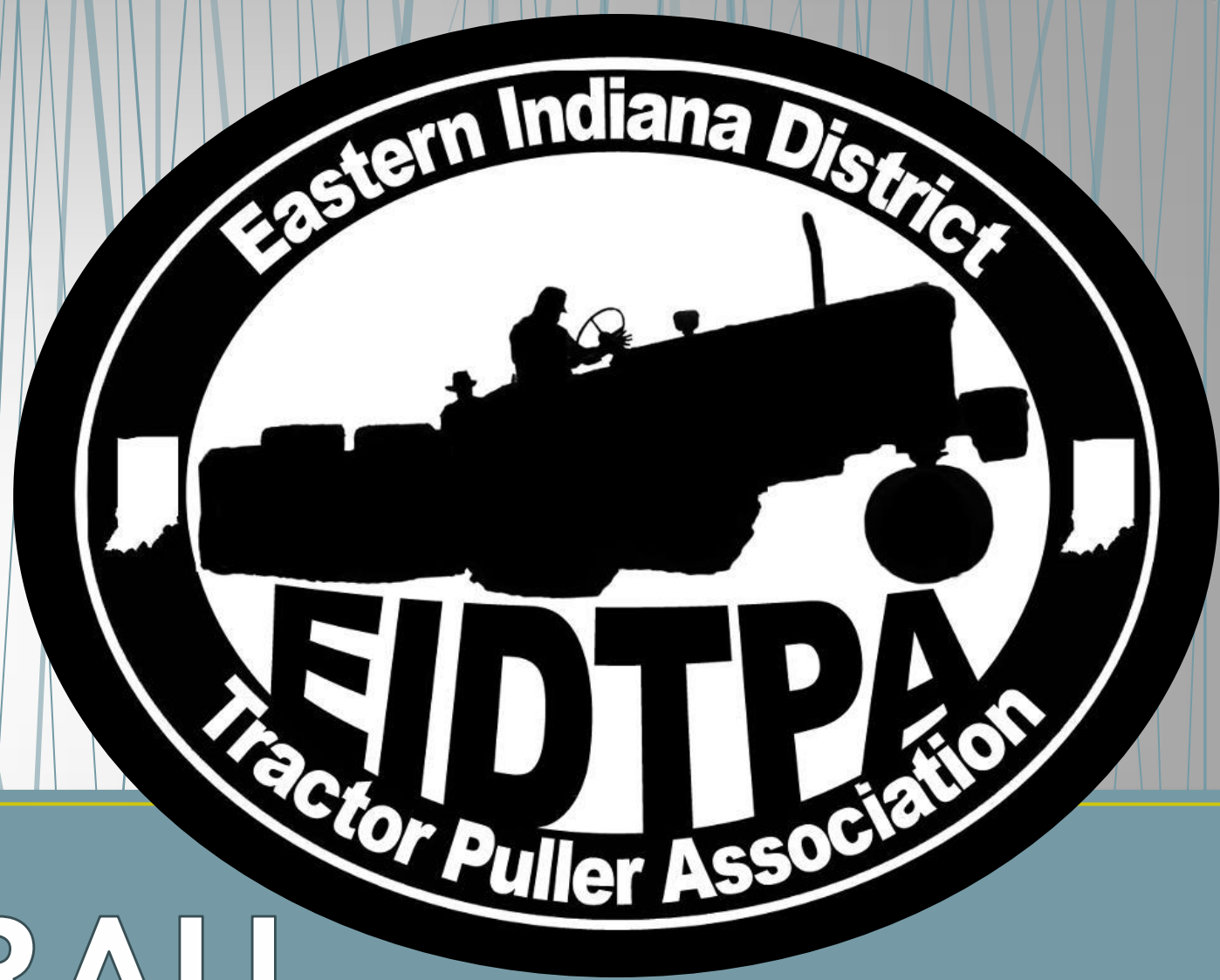
2019 - 8,500 LBS

# 8,500 LBS

- 1<sup>ST</sup> Pat Moran 1850-29 28 pts
- 2<sup>ND</sup> Brian Byrnes 1206-64 26 pts
- 3<sup>RD</sup> Doug Harpring 826-24 22 pts
- 4<sup>TH</sup> Tie Brice Byrnes 1850-15D 16 pts
- 4<sup>th</sup> Tie Kevin Byrnes 1850-15 16 pts
- 6<sup>TH</sup> Tie Andy Mastin 706-34 14 pts
- 6<sup>th</sup> Tie Frank Harpring 706-43 14 pts







**OVERALL**



**10TH**  
Tie

Kevin Byrnes

64 pts



**2019 - Overall**





**10<sup>TH</sup>**  
Tie

Brian Byrnes

64 pts



**2019 - Overall**



9TH

Larry  
Johnson

65 pts



2019 - Overall





# 8TH

Nate Moran

68 pts



## 2019 - Overall





**6TH** Tie

Pat Moran

79 pts



**2019 - Overall**



**6TH** Tie

Frank  
Harpring  
79 pts



**2019 - Overall**



# OVERALL 10<sup>TH</sup> TO 6<sup>TH</sup>

- 10<sup>TH</sup> Tie Kevin Byrnes
- 10<sup>th</sup> Tie Brian Byrnes
- 9<sup>TH</sup> Larry Johnson
- 8<sup>TH</sup> Nate Moran
- 6<sup>TH</sup> Tie Pat Moran
- 6<sup>TH</sup> Tie Frank Harpring





# 5TH

Dave Angle

111 pts



## 2019 - Overall





4TH

Aaron Mastin

114 pts



2019 - Overall



3<sup>RD</sup>

Tim Moran

117 pts



2019 - Overall





# 2ND

Andy Mastin

122 pts



## 2019 - Overall



1<sup>ST</sup>

DOUG  
HARPRING  
195 pts



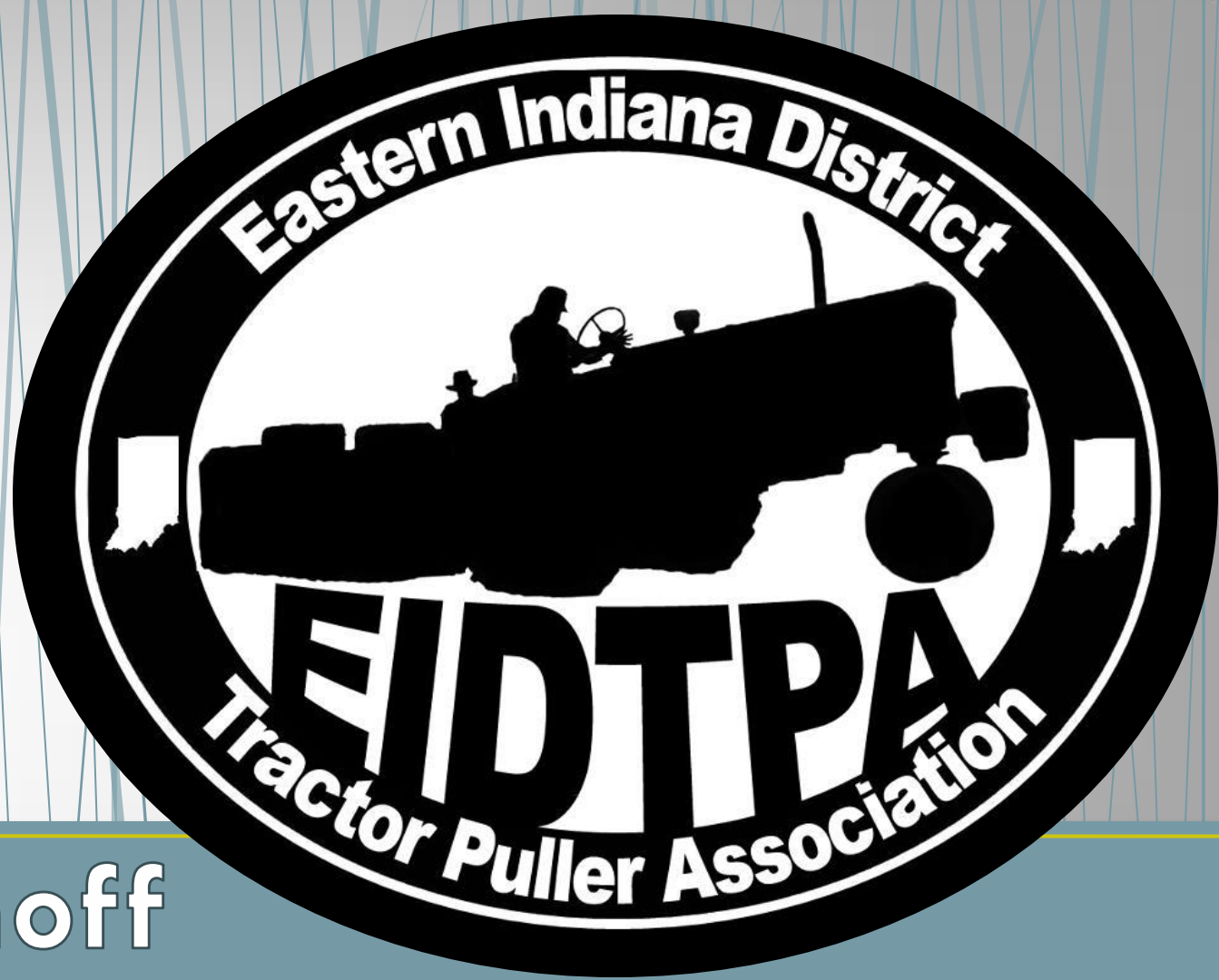
2019 - Overall



# OVERALL 5<sup>TH</sup> TO 1<sup>ST</sup>

- 5<sup>TH</sup> Dave Angle 111 pts
- 4<sup>TH</sup> Aaron Mastin 114 pts
- 3<sup>RD</sup> Tim Moran 117 pts
- 2<sup>ND</sup> Andy Mastin 122 pts
- 1<sup>ST</sup> Doug Harpring 195 pts





**Joe Niehoff  
Award**



656-45

109 pts





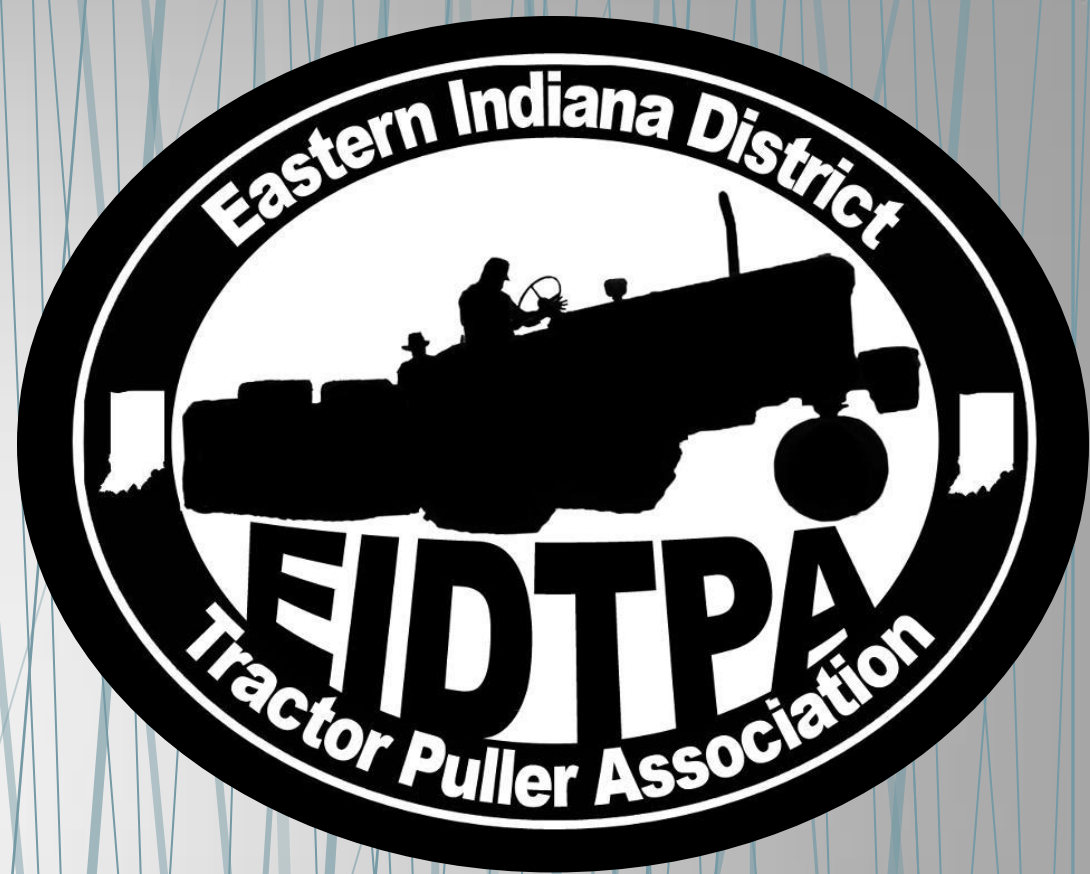
# Tommy Everhart Award

“The Overall for 10,000, 9,500, 9,000 & 8,500”



Doug  
Harpring  
86 pts





Dick "Bruiser" Mastin

Award

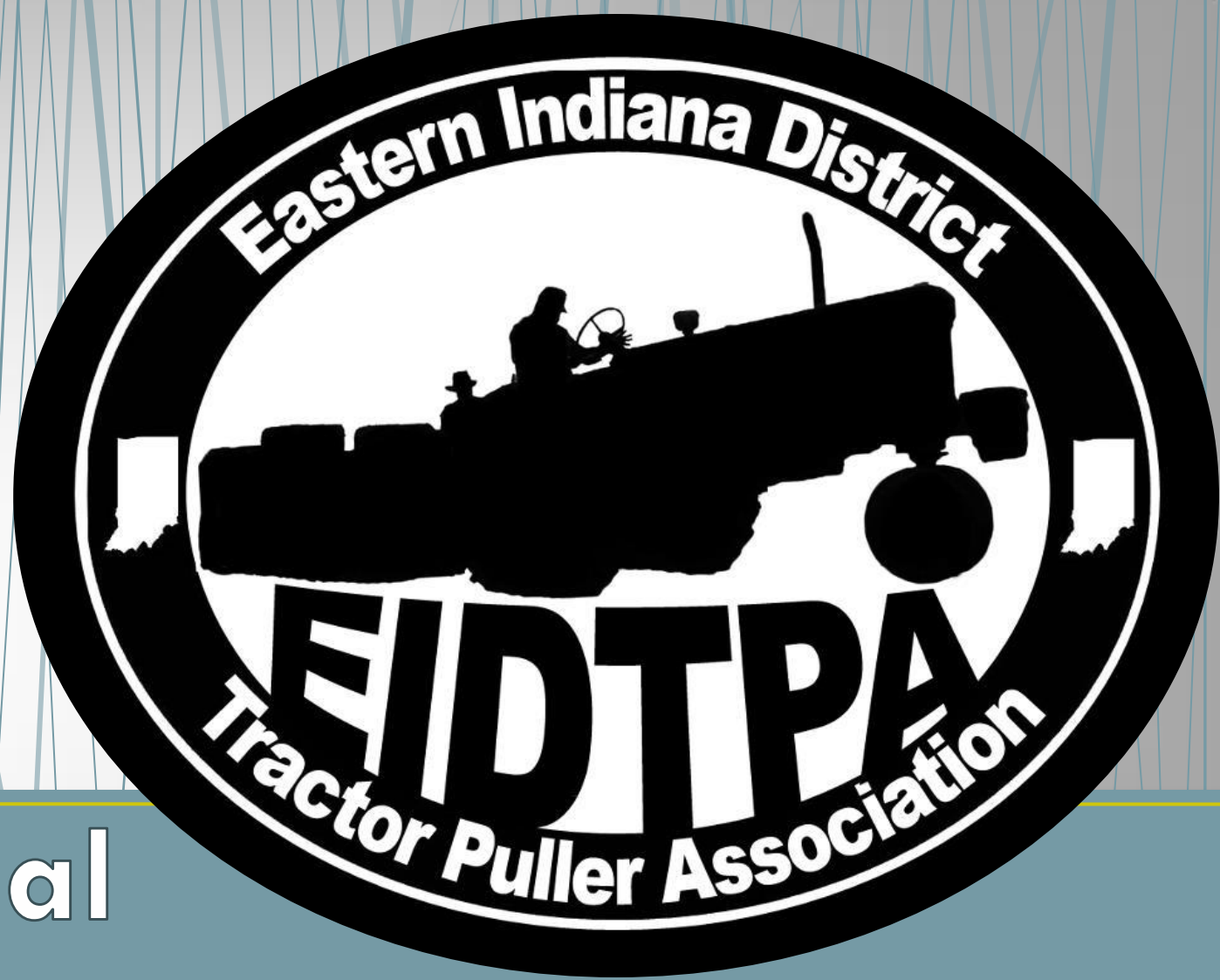
"The Overall for 7,000, 6,500, 6,000 & 5,500"



Tim  
Moran

117 pts





# Special Awards





The  
Judge

# Doug Harpring





# 3 Min Award



Pat  
Moran







# Help Award

# Jack Hubbell





# Pressure Award



# Darren Niehoff



RUSH COUNTY PULLERS

Annual

SHITHEAD

SHITHEAD

# Darren Niehoff



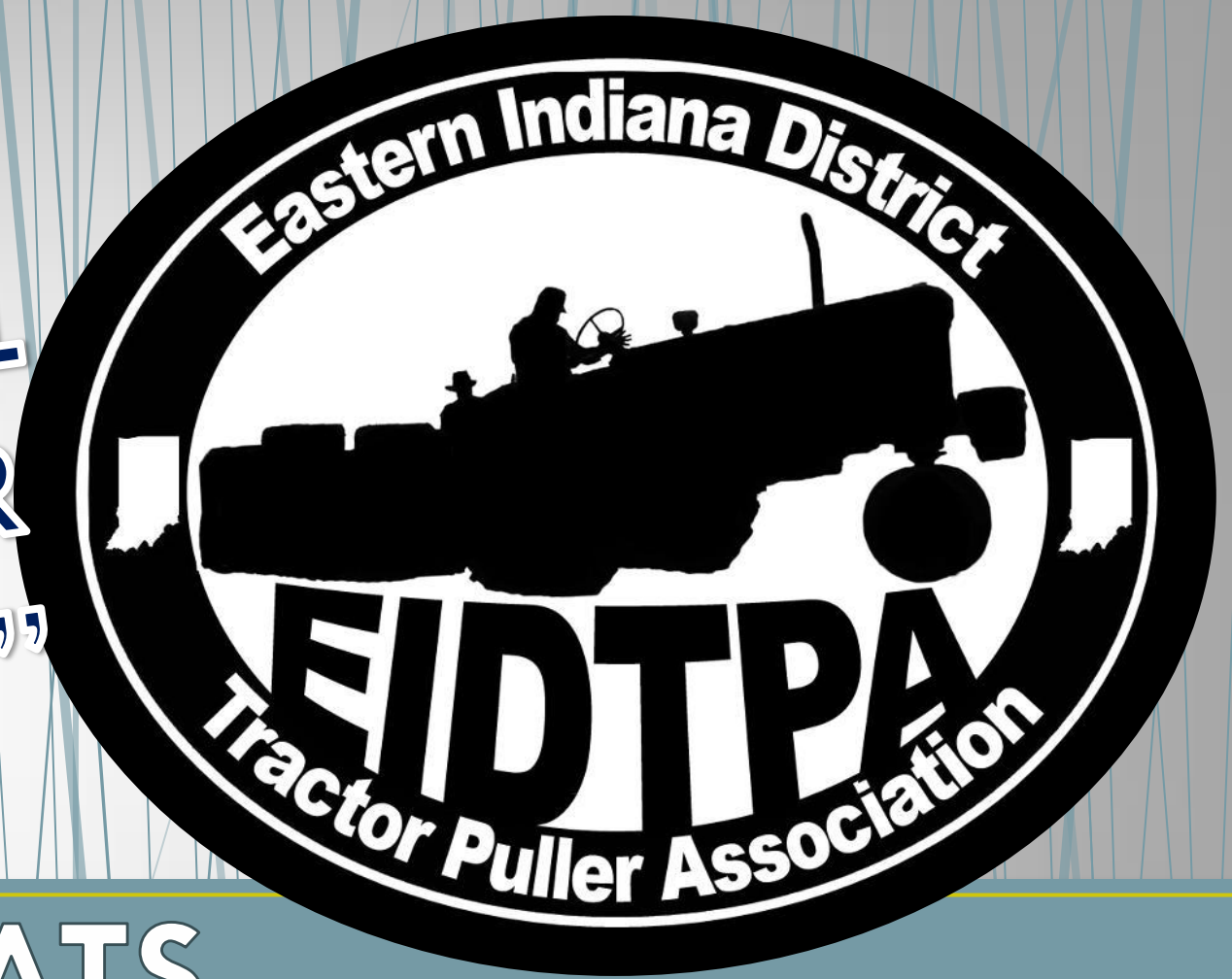




New

Awards

**“THE  
ORIGINAL  
TRACTOR  
PULLING”**



**CONGRATS  
PULLERS**